

ACCENT CHAIRS AND RECLINERS

KENSINGTON



AMERICAN
LEATHER®

Standard Features:

- Advanced unidirectional suspension system
- Premium high-density, high-resiliency foam seat cushion
- Tight back and seat
- Double-needle top-stitch with thick thread
- Tapered wood leg (KSH-CHR-ST only)
- Swivel base (KSG-CHS-ST only)
- Limited lifetime warranty on frame
- Quick-ship delivery

Options:

- Wood legs available in Dune, Ebony, Mink, or Oiled Ash finish (KSH-CHR-ST only)
- Solid Natural Walnut wood legs also available (KSH-CHR-ST only)
- Contrasting stitch detail available in Bermuda Green, Beige, Black, Brown, Charcoal, Cream, Espresso, Gold Brown, Grey, Lemon, Midnight Blue, and Scarlet thread color

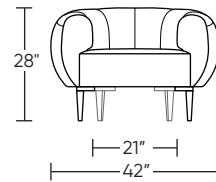
Leg height:

Stationary - 8½"

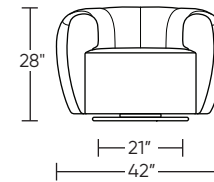
Swivel - 2"

Please use actual leather, fabric, Crypton®, Sunbrella® and Ultrasuede® swatches when specifying furniture as the colors shown may vary due to the printing process.

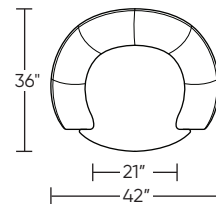
KSH-CHR-ST



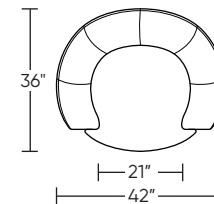
KSG-CHS-ST



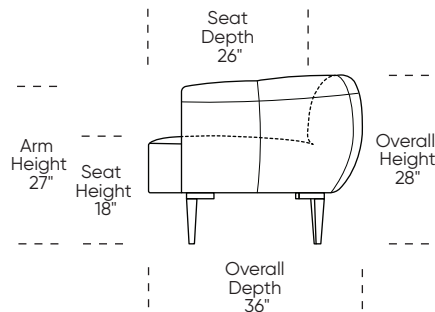
KSH-CHR-ST



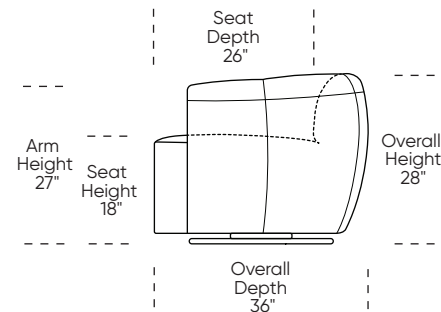
KSG-CHS-ST



KSH-CHR-ST



KSG-CHS-ST



Scale: 1/4 inch = 1 foot
All dimensions are approximate and subject to change.
Specify components from the sitting position.